

The Bible-Centred Youthwork Conference

A MIDWEEK CONFERENCE FOR CHILDREN'S & YOUTH WORKERS

23-26 JANUARY 2012

HIGH LEIGH, HERTFORDSHIRE

SERVANT. SON.

LEARNING TO MINISTER LIKE JESUS.

SLAVE.

JOIN US FOR THIS POPULAR AND GROWING CONFERENCE

Hands-on help for your ministry

Small group fellowships for prayer and discussion

Engaging and relevant Bible teaching

Wide range of practical seminars

One-to-one sessions with experienced Christian workers

**"EXCELLENT, CHALLENGING
AND NOURISHING"**

the goodbook
COMPANY

SERVANT. SON. LEARNING TO MINISTER LIKE JESUS. SLAVE.

How do you see yourself as a Christian? How do you see your role with children and young people? So often we're caught up with the practicalities and skills we need to be useful for Christ. But our enjoyment of the way we serve, our effectiveness, and our personal growth is determined by something much more fundamental: what God has done for us through His Son, Jesus—the servant King. And what He makes us and calls us to be through the gospel. That's the central issue we want to tackle head on as we look at how we should minister like our master.

This conference is a place for busy youth and children's workers to recharge their batteries, refocus their aims, and get tooled up for practical ministry in a warm, supportive and fun atmosphere. Wherever you're at in your ministry—just starting out, or settled and serving—this is the conference for you.

Over the four days of this popular and growing conference, we aim to feed the minds of participating youthworkers, hone our Bible-handling skills, encourage our souls with the nourishment of God's Word, and spur each other on in the vital task we have before us.

This is the tenth in our annual series of residential conferences for those working with children and young people. Through an engaging mix of Bible-readings, talks, seminars and discussion groups we get to grips with what the Bible says about serving like Jesus.

Great teaching, practical training, stirring encouragement and relaxed fellowship with people who face the same challenges and issues as you week by week.

WHAT'S THE PROGRAMME?

The morning Bible readings by Pete Woodcock will set the agenda for the conference, as we look at Matthew's Gospel to see inside Jesus' ministry. More relaxed evening forums will focus on how we can start to think about our own ministry in a way that mirrors our master.

Part of each day will be spent in fellowship groups wrestling with how we apply some of the teaching we have received. There will also be a wide range of practical seminars on offer to meet specific needs for both experienced youthworkers and those who are new to children's and youth work.

A unique feature of this conference is the time we spend each day in Know & Tell Sessions, where we get down and dirty with the basics of understanding, applying and teaching God's Word to the age groups we are working with. The feedback and insight from others that these sessions provide will be invaluable in helping us to improve our Bible-handling skills and communication techniques. This year, the Know & Tell groups will focus on responding to the risen Lord in John's Gospel.

We offer three options for these Know & Tell groups:

A Newcomer. If you've never been in this kind of group before, then this is the one to choose—a gentle non-threatening start! (Note: "newcomer" means new to this kind of group—you may or may not be new to youthwork.)

B Group practice. You will be asked to do some preparation on one particular passage, but the group works together to produce talk programmes, outlines and presentation ideas.

C Advanced. Participants will be asked to present a full talk for critique.

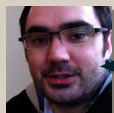
Please indicate when you book which type of group you would like to join.

WHO'S IT FOR?

We expect that most of the people attending this conference will be full-time children's or youth workers attached to a church, but we welcome anyone involved in other aspects of youth work on a part-time or voluntary basis, particularly those who are new to youth work, or those who may be wondering about whether they are called to youth work as a ministry.



"Always stimulating and encouraging"
Steph, youth and student worker, N London



"I was encouraged to think more deeply about heaven, and the one we're serving"
Jonny, youth worker, N Ireland



"Great to catch up with some old friends and make some new ones"
John, youth worker, Bedfordshire

THE SPEAKERS



Pete Woodcock leads our morning Bible readings from Matthew. Pete leads Cornerstone Church in Kingston and is also the Evangelist for the Co-Mission Network. He is married to Anne and they have two children.



Jonty Allcock works with a church in North London. He rides a six foot unicycle and plays the saxophone. Jonty is the author of *Lost*, which grew out of his talks at the Sorted youth event.



Rory Bell is the Training Director of TnT Ministries. Rory and his wife, Kim, have masses of experience of children's work in their home country of South Africa.



Dave Fenton has led the youth work tracks at Keswick and Word Alive for many years. He is honorary assistant minister at Christ Church Winchester.



Jeff Hammer leads the scratch team of musicians at our conference. Jeff is a professional musician who is also an experienced youth worker.

Mel Lacy runs the Youth and Children's Ministry course at Oak Hill Theological College in North London. She has years of experience in youth ministry including at the Keswick Convention, New Word Alive and Soul Truth in Ireland.



Alison Mitchell was a youth worker and a schools worker, before moving to The Good Book Company as Children's Editor. She has a perfectly rational fear of spiders.



Trevor Pearce is an experienced youth worker who is on the staff at All Souls Langham Place. He is passionate about West Ham and his three daughters...



Tim Thornborough is the publisher at The Good Book Company and ran the youth work at a SW London church for many years. He now teaches 3-5s in Sunday School.



A wide range of outside speakers will also be attending the event as seminar speakers.



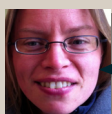
"Refreshing, inspiring... awesome. It's the place to be"
Mark, children's worker, Manchester



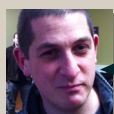
"It's been fab"
Julie, youth and children's worker, Merseyside



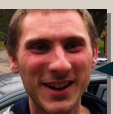
"Great to spend time with friends and be encouraged by fabulous teaching"
Sarah, youth worker, Manchester



"Enjoyed hearing the stories of other youth workers and being encouraged"
Sarah, youth worker, Ireland



"A joy to be recalibrated to God's priorities in my ministry"
Dan, youth worker, St Albans



"A great time, a great conference"
Richard, youth worker, Cambridgeshire

VENUE

High Leigh Conference Centre is set in the heart of the Hertfordshire countryside within 40 acres of lawns, parkland and woodland. Accommodation is in a mixture of twin and single rooms, with full en-suite facilities. There are also a few standard rooms available, either twin or single, with bathroom facilities close by. Standard rooms cost £30 less than en-suite, and are available on a first-come, first-served basis.

FEES & BOOKING

Grab the early-bird rates by booking before Monday 12th December: £249 (en-suite) or £219 (standard). Fees after December 12th are: £259 (en-suite) or £229 (standard). The conference fee includes full board and all materials. You will need to pay a non-returnable deposit of £30 when you book. We can invoice your church/organisation for the remainder. Book online at www.thegoodbook.co.uk/servant (£1.25 booking fee) or use the form below (£2.50 booking fee for postal or phone bookings).

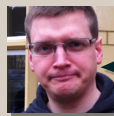
**BOOK BEFORE
DEC 12TH FOR
EARLY-BIRD
RATES!**

THE GOOD BOOK COMPANY

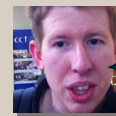
Our passion as an organisation is to get the Bible to work in people's lives and ministries. This conference has grown out of our popular series of training days for youth and children's leaders.



"Will be using the material we developed in my church"
Claudine, children's worker, M'boro



"Great to spend time with people who face the same problems as me"
Giles, youth worker, S London



"Great combination of biblical truth with real world application"
Todd, families minister, W London

WHERE & WHEN

The conference starts with tea at 4.30pm on Monday 23rd January. First session at 5.00pm. The conference finishes with lunch (1.00pm) on Thursday 26th January.

High Leigh Conference Centre is only 7 miles from Junction 25 of the M25. Broxbourne is the closest mainline station. (There is a regular service from London Liverpool Street.) Stansted Airport is 45 minutes away by road or a 35-minute train journey from Broxbourne.

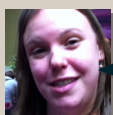
We can arrange transfers from Broxbourne or Stansted for the start and end of the conference.

Call us or see our website for further info.

Tel: 0333 123 0880

Web: www.thegoodbook.co.uk/servant

Email: admin@thegoodbook.co.uk



"Great conference centre - comfy beds!"
Emily, children and families worker, Sussex

HOW TO BOOK

Book online at www.thegoodbook.co.uk/servant (£1.25 booking fee) or return the form below (£2.50 booking fee).

NAME: _____

ADDRESS: _____

POSTCODE: _____

TEL: _____ EMAIL: _____

CHURCH/ORGANISATION: _____

Full-time Part-time Voluntary

Your age: 18-21 22-29 30s 40s 50+

Age range you principally work with:

No of years' experience:

No of years as a full-timer:

Male Female Cyberman

Know & Tell (gobbet) groups (please tick your choice)

A: newcomer B: group practice C: advanced

Musical instrument I can play/would bring: _____

En-suite room (£249* + £2.50 booking fee) or Standard room (£219* + £2.50 booking fee)

*Early-bird rates. See top of this page for fees if booking after Dec 12th.

I enclose a deposit of £30 (non-refundable).

You will be invoiced for the balance.

I enclose the full conference fees (£249* or £219* + £2.50 booking fee).

Cheque payable to The Good Book Company Ltd.

Credit Card (supply details below).

Number: _____

Exp date: _____

3-digit security code: _____ Issue No (Maestro only): _____

Signature: _____

Please return this form to:

The Good Book Company, Elm House, 37 Elm Road, New Malden, Surrey, KT3 3HB, UK